

HARMOHINDER SINGH ANAND & SONS.



**COMPANY
PROFILE
(2023-2024)**



**TRADER |
MANUFACTURER**

ABOUT US

HARMOHINDER SINGH ANAND AND SONS is your one-stop source for commercial building materials.

Established in 1985, our team has decades of combined experience in the MENA regions as well as other countries like Canada, East Africa, India etc.

**EXPORTING
ONLY THE
QUALITY**



HSAS serves all your façade needs by providing you with Standard & Customised Products such as Plastic Molding, Thermal Breaker, Accessories for Cladding Fixing, PVC Separator, Joint Filler, Accessories for Glass Doubling, PVC Blocks, etc.

HSAS

**TRADER |
MANUFACTURER**

**"QUALITY
MEANS DOING
IT RIGHT
WHEN NO ONE
IS LOOKING"**

-HENRY FORD



MISSION

We strive to achieve highest levels of customer satisfaction by serving you with integrity and commitment.

We believe in building long-term relationships with our customers, suppliers and stakeholders that are founded on trust and loyalty.

VISION

ON TIME DELIVERY

We are dedicated to ensure on timely delivery to our customers. We understand your requirements and timelines.

HIGHEST QUALITY

We deliver the highest quality products, maintaining complete transparency with our clients and ensuring a great customer experience

CUSTOM REQUEST

We offer a wide range of product options and cater to custom requests as well.

ONE STOP

SOLUTION

HSAS is a one stop solution for all Facade needs. Anything you need, we deliver.



MACHINERY & TOOLS



Keeping in mind the importance of our environment our factory is equipped with waste management system and hence falls into GREEN category of environmental certificate.

All our machinery and die tools are fully automated with PLC.

Our employees being our main assets all necessary safety measures are double checked before they takeover the live machinery.

We also prefer using only virgin/fresh materials to maintain the best quality of the products.

We have a seprate tool room for quick and accurate production of custom made goods.

OUR PROJECTS /CLIENTS

LUSAIL PLAZA TOWER'S
BURJ KHALIFA
PALM ISLAND
SITCO
HAMBURG



GULF EXCRUSION
REEM INDUSTRIES
AL MIMARI
ALUTEC

VIVACE
INTERNATIONAL FZC
BOSCO
MDH
VOLTAS



VOLTAS



PRODUCT CATALOG



Aluminum Door &
Window Accessories

Architectural Profiles

Curtain Wall Water Proofing

Thermal Insulation

Rockwool Fixing & Pin

Safety Products

Packing Filler

SCREWS/TOOLS

FRAME DRAINAGE PROFILE

SELF STICKING HANGERS

PLASTICS, RUBBER
& METAL ACCESSORIES

OIL SEALS

Aluminum Door & Window Accessories



FASTENERS & CORNER CLEAT

Required for easy assembly of the aluminum framing. Supplied drilled and tapped, complete with screws.

RUBBER and PLASTIC PRODUCTS

Offering a huge range of silicone extrusions, tubing and seals.

Our range includes a variety of popular and specialist profiles and sizes, and are available in a choice of lengths, at different grades including medical grade Silicone.

Architectural Profiles



SILICON RUBBER PROFILE

Offering a huge range of silicone extrusions, tubing and seals. Our range includes a variety of popular and specialist profiles and sizes, and are available in a choice of lengths, at different grades including medical grade Silicone

Curtain Wall Water Proofing



EPDM Rubber Membrane

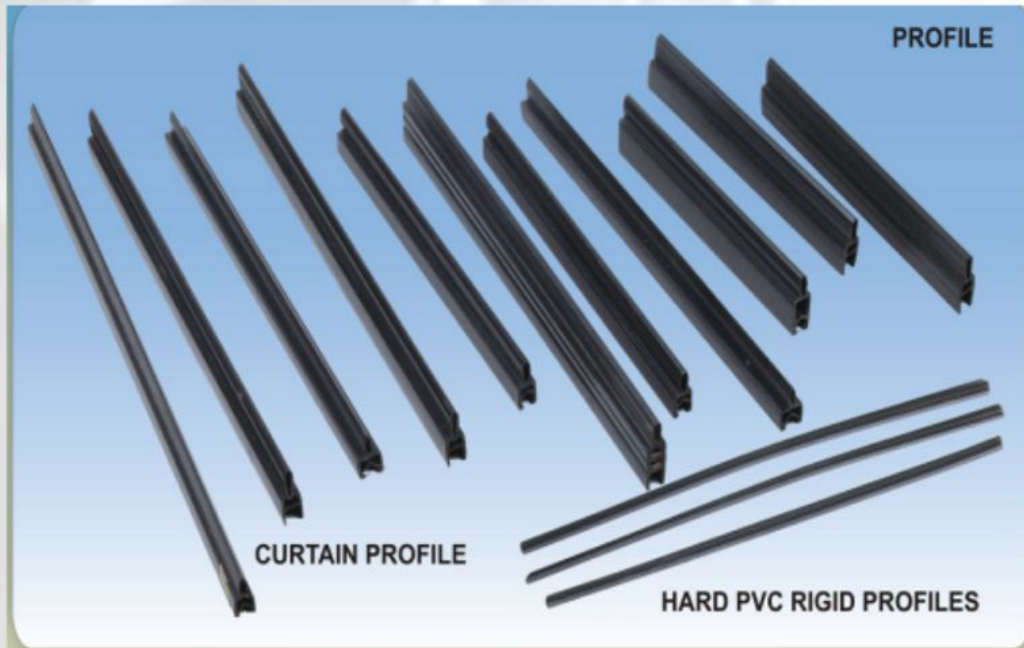
EPDM waterproofing membrane offers multiple building envelope solutions to suit all time climate conditions with life time warranty.

EPDM is a synthetic elastomeric sheet membrane and a variant of natural rubber with unique product properties makes the most ideal product for roofing systems . EPDM solutions can quickly make any building airtight and watertight .

EPDM vapour barrier membrane or vapor barrier is very durable and flexible rubber sheet with lot of extreme properties for longevity of construction structures and living comfortable.



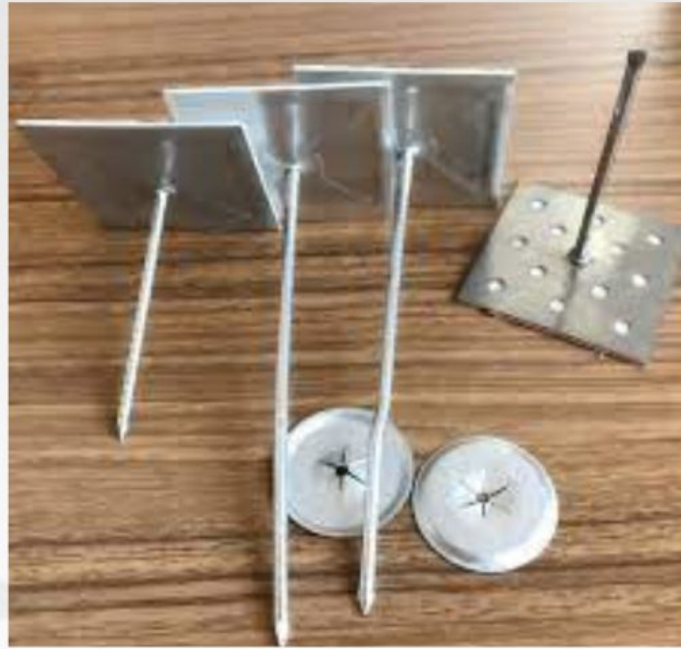
Thermal Insulation PVC Profile



Isolators

Required for easy assembly of the aluminum framing. Supplied drilled and tapped, complete with screws.

Rockwool Fixing & Pin



ROCKWOOL PIN

These pins are used to mechanically fix and install insulation material that can be pierced by metal spindles.

Variety of sizes can be customised according to the needs.

Safety Products



SAFETY PRODUCTS

Personal protective equipment may include items such as Shoes, Helmet, Belt, Gum boots & Reflector jackets. All of these can be customized in varying sizes & colours.

Packing Filler

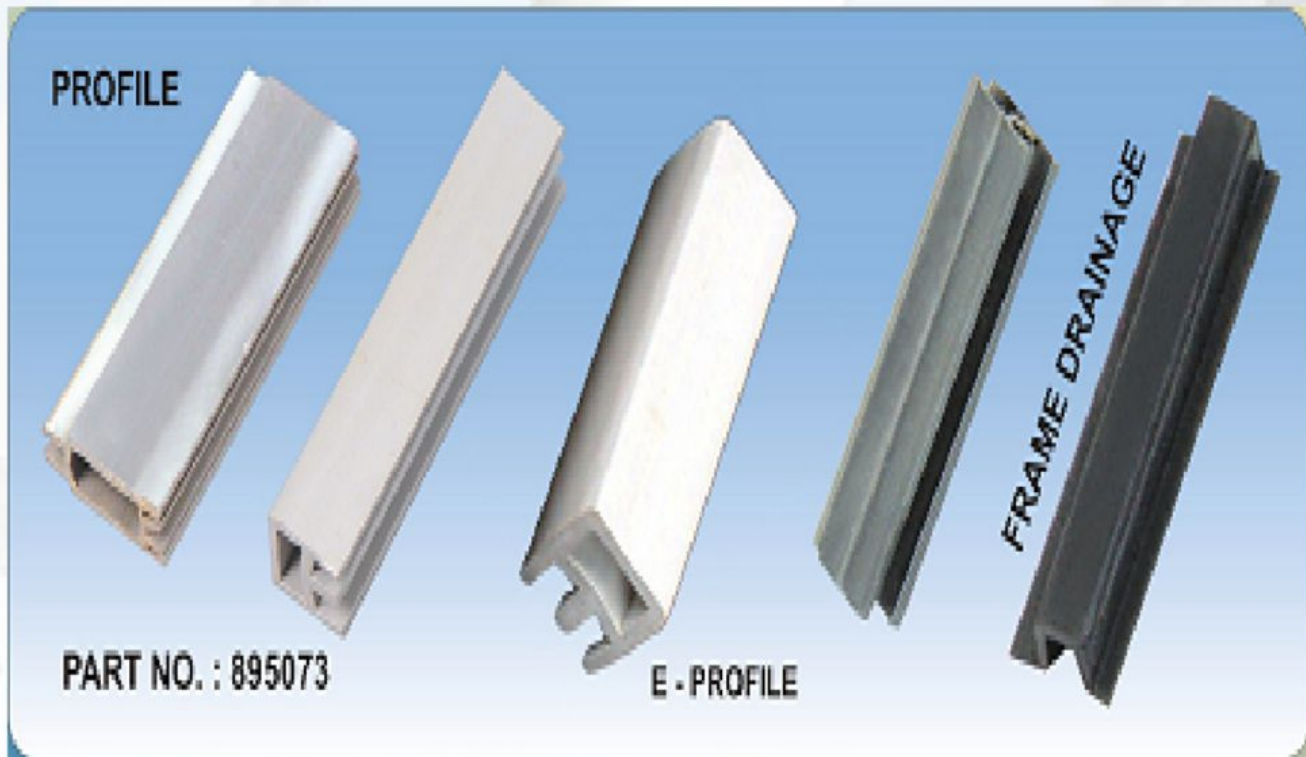


PVC SHEETS & PACKING SHIMS

a manufactured component used for levelling or holding up space in building applications, from precast concrete panels through to aligning window & door frames.



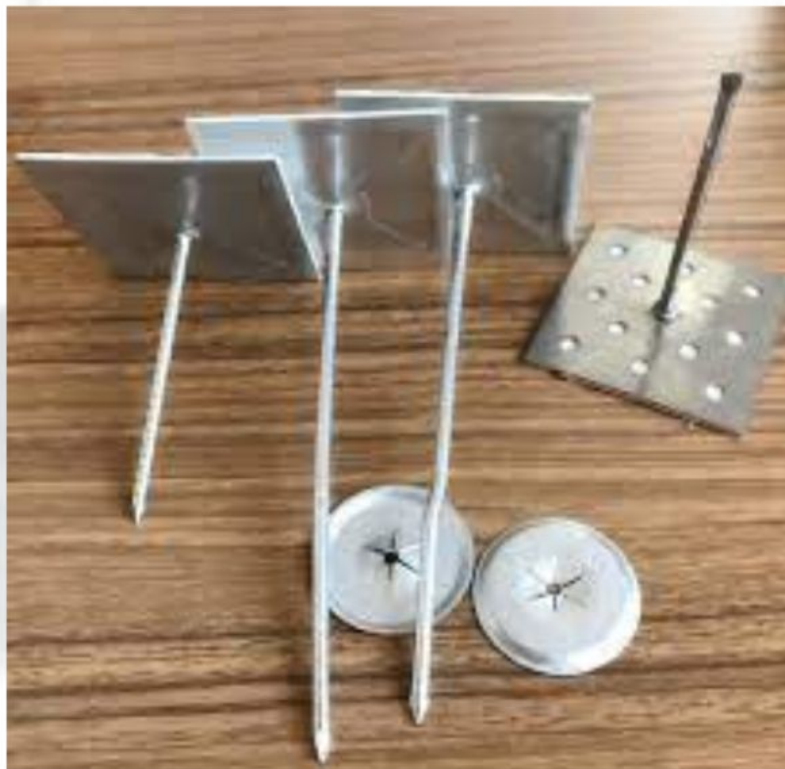
FRAME DRAINAGE PROFILE



DRAINAGE PROFILE

Customized
according
to the
clients'
needs &
designs

SELF STICKING HANGERS



SELF ADHESIVE PINS

An all metal fire resistant anchor that is both fast and easy to install. Suitable for fixing all types of insulation to concrete, brick, stone or block base material. Insulation fastening solutions for concrete and masonry, suitable for insulation materials such as mineral wool, EPS, XPS and fibreglass

SCREWS/ TOOLS

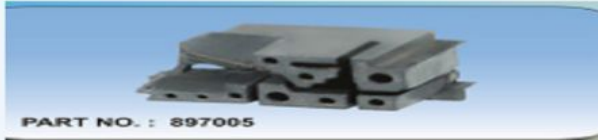


SCREWS/TOOLS AVAILABLE

- BLIND RIVETS
- RIVET NUTS
- SELF CLINCHING FASTENERS
- SELF DRILLING SCREWS
- HAND TOOLS, BLIND RIVET AND RIVET NUTS
- POP RIVET
- AIR TOOLS FOR BLIND RIVETS AND RIVET NUTS
- GENERAL PURPOSE FASTENERS

PLASTICS , RUBBER & METAL ACCESSORIES

All types of
accessories
in plastic,
metal &
rubber
available





**FLY SCREEN
HANDLE**

PART NO. :896040



ROLLI



ROLLI



30 x 100 x2 /3 /4 / 5 /6



FLY SCREEN HANDLE

PART NO. :BIG 896083

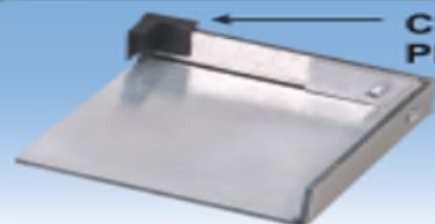
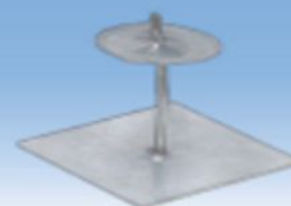


U - SJIM EXCEL 3MM

PART NO. : 895005



MULION

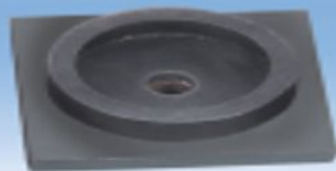


**CLADDING COVER
PLATE**



ROLLI

PAD



HORSE SHIM



PART NO. : 895034

U - SHIM



**3MM , 5MM
75X3X100, 75X5X100**

PVC RIGID FITTING SHEM



**30 SERIES
30X100X 3, 4, 5, 6.
43 SERIES
43X100X 3, 5, 6.
46 SERIES
46X100X2, 3, 5, 6.**

SMALL BOTTOM 895043



PART NO. : 895043

CORNER



AL01



PART NO. :896043

ESC PAD



70 SERIES, 80, 120, 150

SP 5

SLIDE FITTING



PART NO. : 895052

POOJILE



H Y 896058 PART NO. : 750029

EPDM RUBBER PART NU



PART NO. : 896055 / 750030

DRAIN COVER

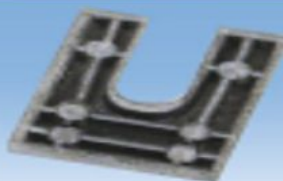


PART NO. : 897006

EROI



**U - SHIM
EXCEL
3 / 5**



PART NO. : 895004

STRIP SHINE

20 X 100 X 2
2 / 3 / 5 / 6



PART NO. : 895007

2 / 3 / 5 / 6

STRIP SHIM

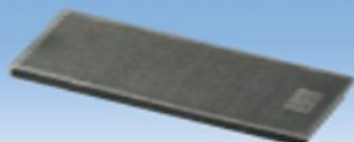


PART NO. : 895006 / 895007 / 89008
895009 / 895010

ER 02



SERIES 43 / 46 / 30



PART NO. : 895014

46 X 100 X 6

BRICK PAD



**DRAIN COVER
MIMORI**



PART NO. : 895059

NYLON CLIP



VA TWO LEG



PART NO. : 895057

PNU : 895098



PART NO. : 031902A

SH - 1



SMALL 896048

BIG

**EPDM RUBBER
'L' TYPE**



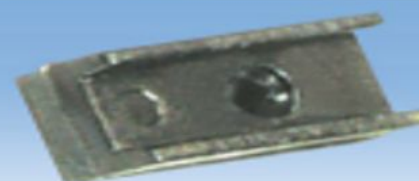
PART NO. : 897001

STOPPER FOR GLIDER



PART NO. : 895071

GLIDER



PART NO. : 895072

EPDM RUBBER PROJILE



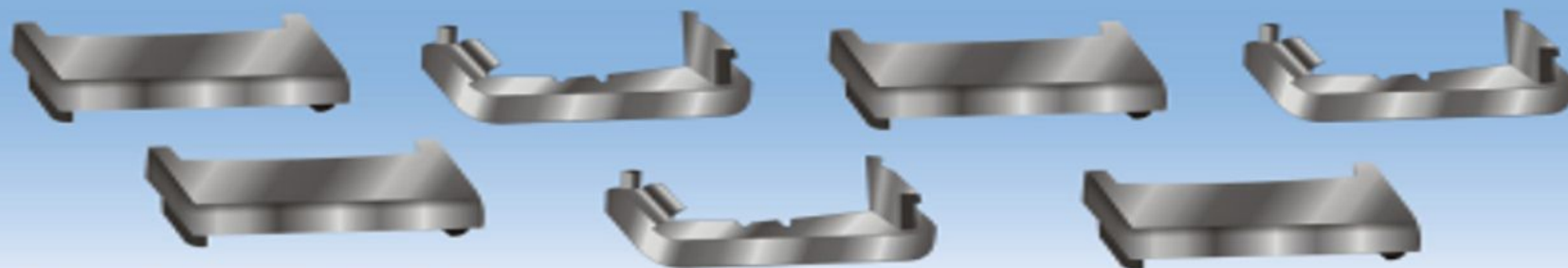
PART NO. : 760030

EPDM RUBBER



PART NO. : 897004

CAP



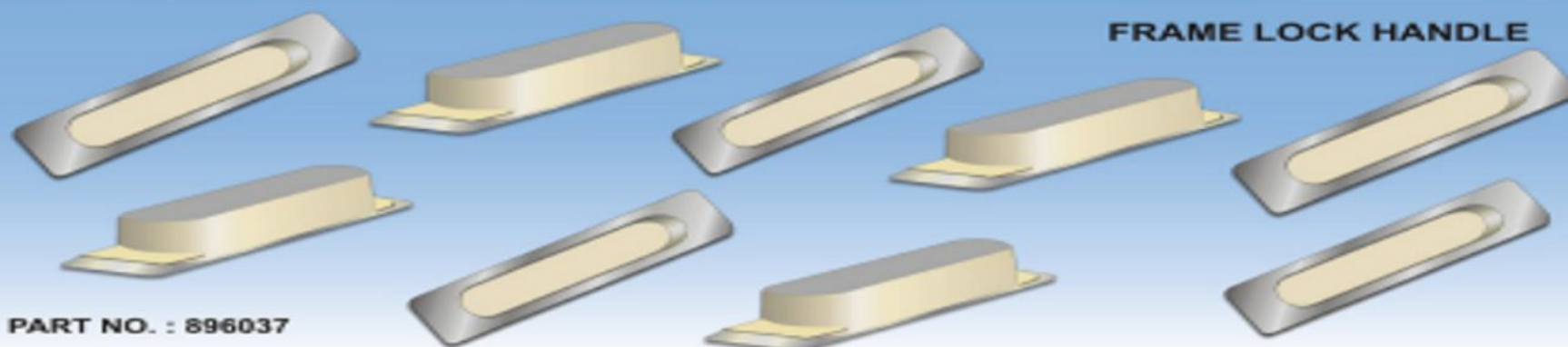
PART NO. : 895068 / 900.09.001

EPDM RUBBER MOULDING

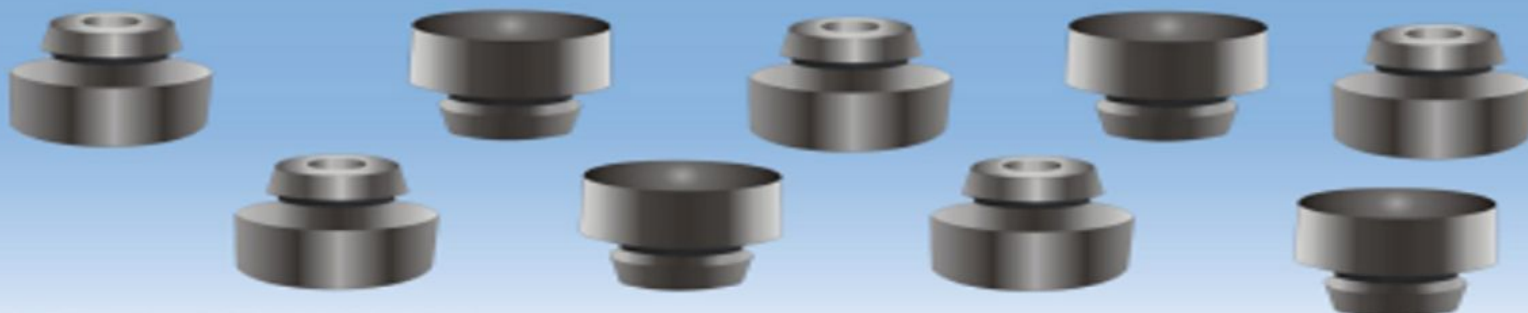


PART NO. : 750028 / 896054

FRAME LOCK HANDLE

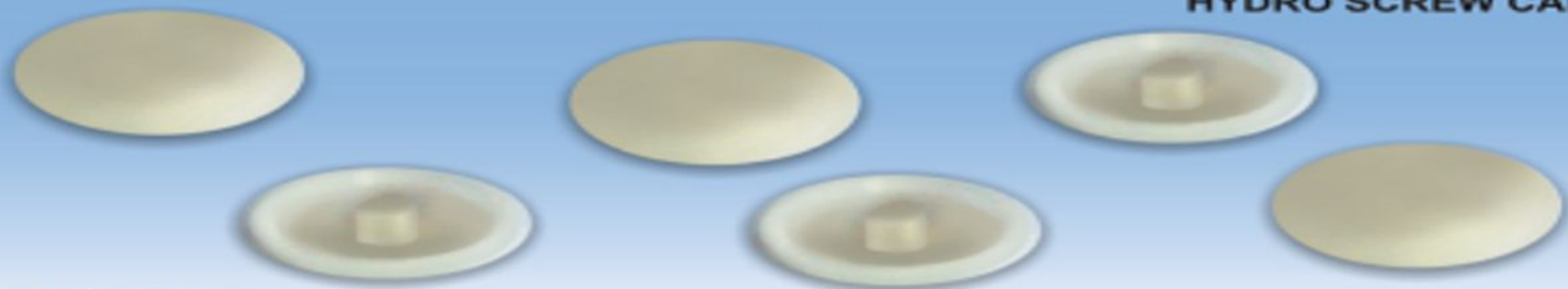


PART NO. : 896037



CAP

PART NO. : 895098 / O31902A



HYDRO SCREW CAP

PART NO. :895069



WASHER

BIG HINGE



PART NO. : 895011

HINGE PIN

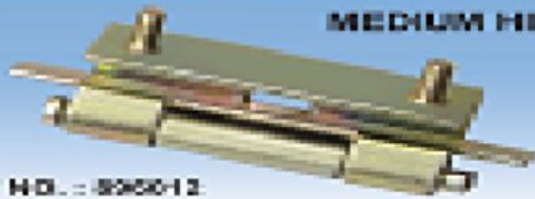


BIG HINGE



PART NO. : 895011

MEDIUM HINGE



PART NO. : 895012

SMALL HINGE



PART NO. : 895031

BIG HINGE



PART NO. : 895031

COUPLING



M - 8 / M - 10

CARRIAGE BOLT



M - 8

GLASS CONNECTOR

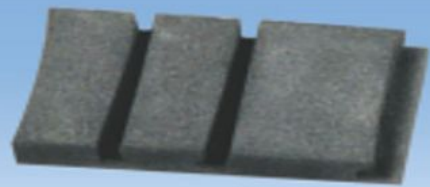


PART NO. : 895038

CLAMP



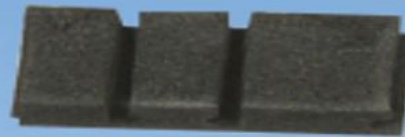
PART NO. : 895059



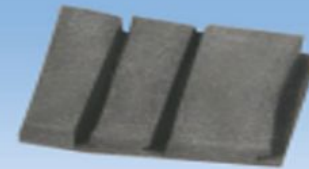
SPONAGE CORNER
PART NO. : 895028



PART NO. : 895027

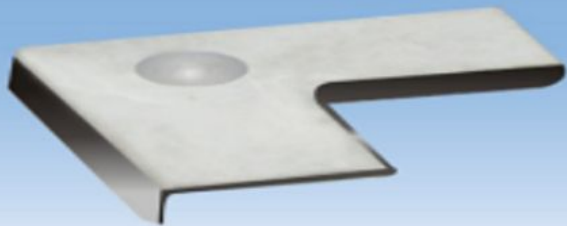


PART NO. : 895026

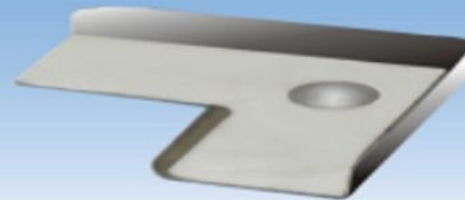
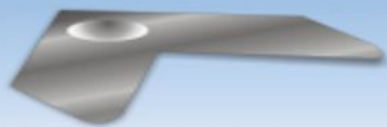
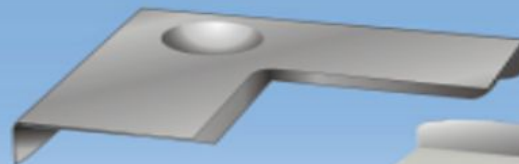
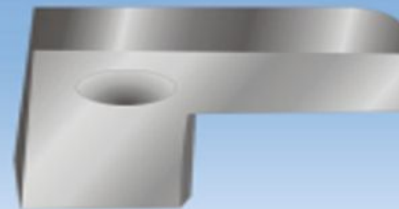
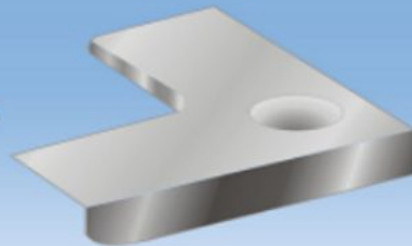


PART NO. : 895025

SPONAGE



PART NO. :T - 897000



METALCLEAT
1.5 MM & 2MM

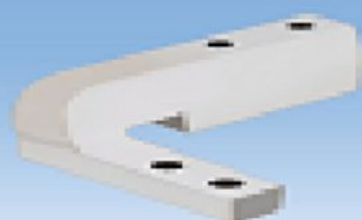
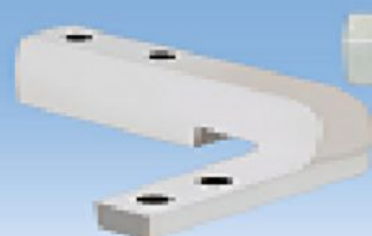
PART NO.: 1.5 MM 895037 / 2MM 895036 / 896036 / 896039



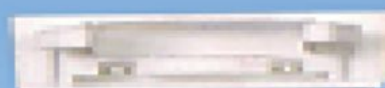
PART NO. : 855641



WINDOW FRAME CONNECTOR
(T - TYPE, RIGHT LEFT)



PART NO.: L 855341 R 895048 / 895038

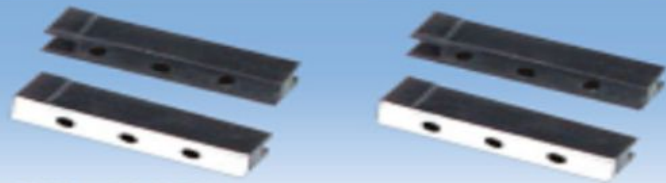


VA TWOLEG



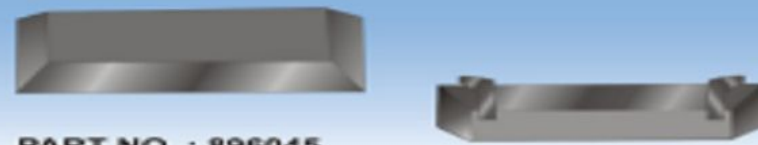
PART NO. : L - 26444 / F - 855855

PART NO. : 855657



PART NO. : 896038

WATER DRAW COVER CAP



PART NO. : 896045

SHUTTER CAP A & B

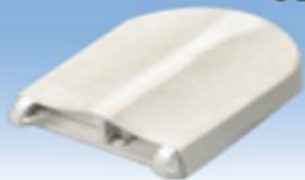


PART NO. : 895065 / 895066



PART NO. : 897005

VENTILATOR KIT



SHUTTER CAP A & B



PVC 'U' TYPE CLAMP



ALKUA



VENT



PART NO. : 897002

SHUTTER CAP



EPDM RUBBER PAD



PART NO. : 897803



031902CC

PART NO. : 895054

CANADA



PART NO. : 140302 / 895056

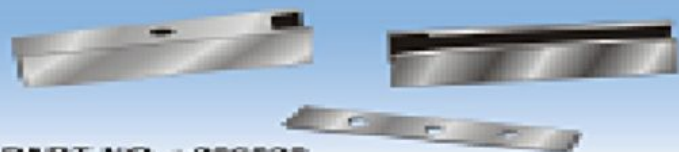


CORNER MOULDING



PART NO. : 896049

WINDOW FRAME LOCK



PART NO. : 896038

PLASTIC PLATE



PART NO. : 896044

CUTTING BLADE



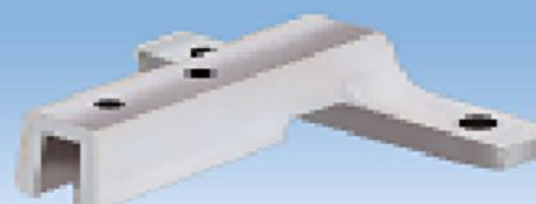
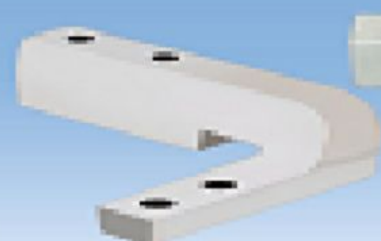
PLASTIC PLATE



PART NO. : 895044



PART NO. : 895041



WINDOW FRAME CONNECTOR
(T - TYPE, RIGHT LEFT)

PART NO. : L - 895041 R - 895042 / 895039



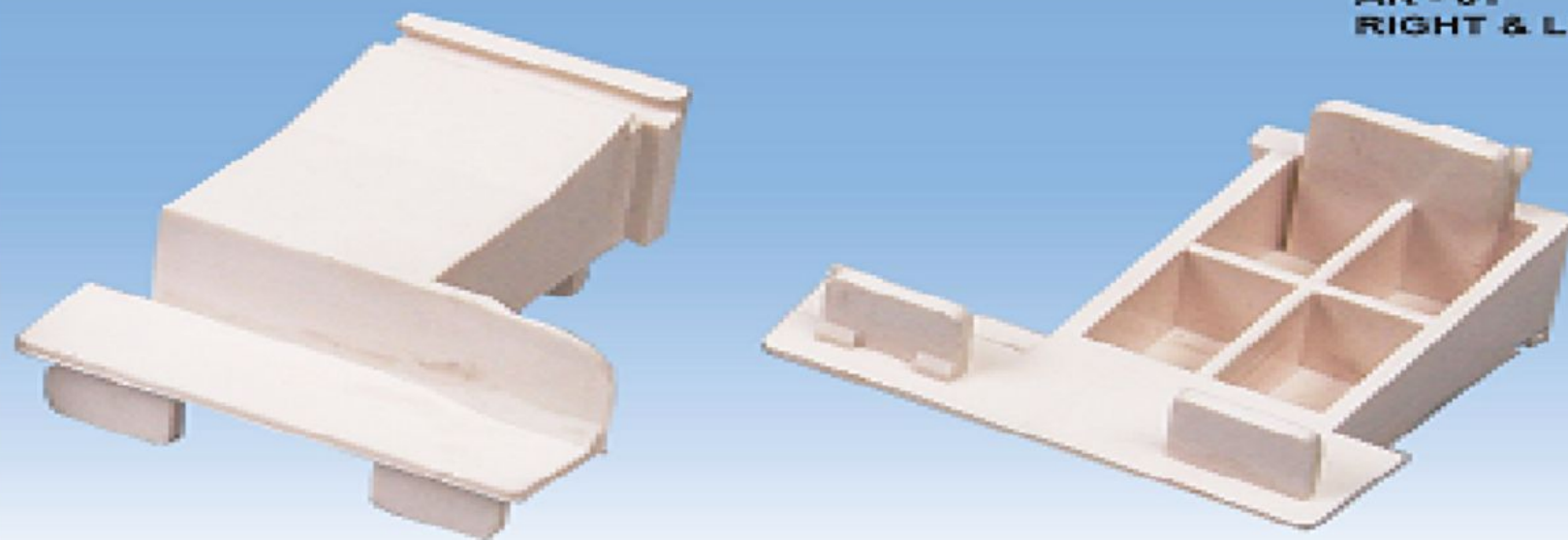
VA TWOLEG



PART NO. : L - 26444 / F - 895858

PART NO. : 895857

**AK - 61
RIGHT & LEFT**



MULION



OIL SEALS



Oil seals

These are used to protect shafts and bearings from ingress of dirt and foreign matter and egress of oil or grease. An oil seal generally consists of an outer circular metal part and an inner flexible member that does the actual sealing and is bonded to the metal part by chemical adhesive agents.

CERTIFICATE OF REGISTRATION

Certificate of Registration



This is to certify that
Quality Management System

of
HARMOHINDER SINGH ANAND & SONS
at

I-125, SECTOR 1, BAWANA INDUSTRIAL AREA, NEW DELHI – 110039, INDIA.

has been independently assessed and is
compliant with the requirements of:

ISO 9001:2015

For the following scope of activities:
DEALS IN ALL TYPES OF PVC RIGID FITTING, PLASTIC AND METAL PARTS,
EXCRUSION OF HARD PVC PROFILES, RUBBER MOULDINGS, HEAD GASKETS,
SILENCER PACKINGS & OTHER AUTOMOBILE PARTS.

Certificate Number: UQ-1202

Validity of this certificate can be verified at www.ukglobals.uk/Verify

Date of Certification	02 March. 2020
1 st Surveillance Audit	01 March. 2021
2 nd Surveillance Audit	01 March. 2022
Certificate Expiry (subject to the company maintaining its system to the required standard)	01 March. 2023

Authorised Signatory



This certificate is the property of UK Global Certification & Inspection Limited and shall be returned immediately on request.

2nd Floor College House, 17 King Edwards Road, Ruislip, London, HA 47 AE, United Kingdom

Website:- www.ukglobals.uk, enquiries@ukglobals.uk

Company No. 12654562

REACH US AT

E-mail: **malik_hsab@yahoo.com**

Call at: **+91 9999921839**

+919953073329

+91 9911181860/61

Website: **Harmohinderandsons.com**

THE FACES BEHIND



CHARANJIT SINGH ANAND
DIRECTOR



MANJIT SINGH ANAND
DIRECTOR



AMANAT SINGH ANAND
MANAGING DIRECTOR



GURANSH SINGH ANAND
MANAGING DIRECTOR
